

# SPAIN

## SPAIN HAS EVERYTHING YOU NEED

Come and fall in love with the country of...

Mountains, Deserts and Sea

Magical architecture

Passion for the Arts

## SPAIN: COMPETITIVE ADVANTAGES

Spain has remarkable competitive advantages making it a unique destination within Europe

### • DISTINCTIVE ADVANTAGES •



### Accommodations



**16,000 HOTELS**  
WIDE RANGE OF OPTIONS



FROM 5-STAR OR GL TO 1-STAR PENSIONES

REASONABLE PRICES

BOUTIQUE ACCOMMODATIONS

### PARADORES

Castles, palaces, royal manor houses, former convents, fortresses, establishments with seaside pools describe some of 94 hotels in the PARADORES network on the mainland and islands.

[www.parador.es](http://www.parador.es)



### Climate



Mediterranean weather

WARM SUMMER ← MILD WINTERS



21,1°C

CANARY ISLANDS

Average year-round temperature

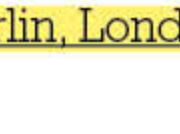
MORE THAN 3,000 HOURS

OF SUN PER YEAR

### Transportation

#### FLYING TO SPAIN

MADRID- BARAJAS AIRPORT



4<sup>th</sup>

EUROPEAN AIRPORT

70 MILL

PASSENGERS A YEAR

IBERIA'S T4 TERMINAL

3<sup>rd</sup> FAVORITE worldwide

THE CAPITAL IS CONNECTED BY AIR to the main European and American cities



Berlin, London, Paris



New York, Mexico City, Caracas

MAIN AIRPORTS

- Barajas, Madrid

- El Prat, Barcelona



Airlines offer direct service to and from Spain:

**AIR CANADA**

**air transat**

[www.aircanada.com](http://www.aircanada.com)

[www.airtransat.com](http://www.airtransat.com)

(1-888-247- 2262)

(1-866- 847- 1112)

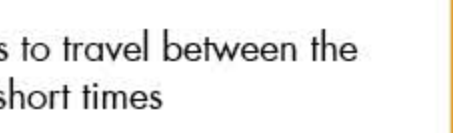
You can travel directly from the following cities

- Toronto

- Montreal



#### TRAVELING AROUND TRAIN



### AVE HIGH SPEED TRAIN

Spain's AVE high speed train allows travelers to travel between the main cities in Spain within very short times



MADRID					BARCELONA
620 Km 2 h 30'	360 Km 1 h 38'	529 Km 2 h 30'	402 Km 1 h 42'	547 Km 2 h 23'	1094 Km 6 h 25'
BARCELONA	VALENCIA	SEVILLA	CÓRDOBA	MÁLAGA	PARÍS

**renfe**

[www.renfe.com](http://www.renfe.com)

Spanish National Railway Network



renfe Spain Pass

Train pass promotion for non-residents to travel around Spain within 1 month



CERCANÍAS RENFE

Commuter train network

## FESTIVALS IN SPAIN

Year-round in Spain you'll find a wide range of cultural and popular festivals of International Tourism interest.



### • MAIN POPULAR FIESTAS •

JAN



Three Wise Men Parade in Madrid

FEB



Carnaval fiestas in Tenerife and Cádiz

MAR



Las Fallas in Valencia

ABR



Moors and Christians, Alicante April Fair, Seville

MAY



Córdoba patios flower festival

JUN



San Juan Bonfires, Valencia

JUL



San Fermin July 6-14, Pamplona

AGO



La Tomatina, Buñol, Valencia

SEP



La Mercè fiestas Barcelona

OCT



El Pilar fiestas Zaragoza

NOV



All Saints Fair, Cocentaina, Alicante

DEC



Virgen del Castillo patron saint fiestas Yecia, Murcia

SOURCES

[spain.info/ca](http://spain.info/ca)

[renfe.es](http://renfe.es)

[avexperience.es](http://avexperience.es)

FOLLOW US

[f Spain.info.ca](https://www.facebook.com/Spain.info.ca)

[@SpainInCanada](https://twitter.com/SpainInCanada)

CONTACT US

[toronto@tourspain.es](mailto:toronto@tourspain.es)

DESIGNED BY

DISEÑO [www.camencaastro.com](http://www.camencaastro.com)

